



Erath Extension EDUCATION CLUBS

A Note from Donna White

Congratulations on hosting the Fall Leadership Training! By all accounts, it was an informative meeting and you were excellent hosts!

The TEEA Spring Conference is coming up April 7th in Granbury. Our county will be checking in the Cultural Arts items. Therefore, we will have to have extra people on site to help check in the entries from all the District 8 counties. Be watching for news from Rosanne, who will have registration information, as it comes in to her.

I will be visiting each club in March to give the monthly program. Here are the dates and times for the March club meetings:

Three Way - March 3rd @ 2 pm

Clairette - March 9th @ 2 pm

Achiever's - March 17th @ 9:30 am

The next TEEA meeting will be on March 18th at 1:30 pm in the Erath Extension Office conference room.



The County Cultural Arts contest was held at the Three Way School on February 3rd. There were a total of 34 entries. Dott Brackin and Jenny Gearhart, Extension Education club members from Glen Rose, served as judges for the event.

See results and more photos on pages 2-3.



COUNTY CULTURAL ARTS CONTEST

Results of the County Contest are as follows:

Fabric Creations – (pic on pg 4) 1st - Flower Iris Apron by Doris Threadgill; 2nd - Food Carrier by Joyce Hughes; Honorable Mention - Regina Cagle, Lena Williams

Fiber Arts – 1st - Crochet Children's Headbands by Lena Williams



Garments & Accessories – 1st - Scarf by Carolyn Hays; 2nd - Blue Jean Pocket Purse by Lynda Ballard; Honorable Mention: Lena Williams, Dorothy Lane

Paper – 1st - Antique Car Notecards by Lynda Ballard



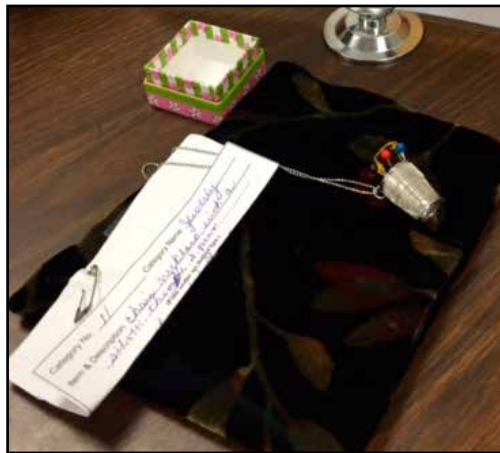
Handstitchery – 1st - Embroidery Pillowcase by Regina Cagle

Quilts – smaller than 50x70 hand-quilted – 1st - Construction Toys quilt by Lynda Ballard (pic on pg 4)

Painting & Drawing – Watercolor Donkey "Barney" by Lynda Ballard



Holiday Decoration - 1st - Christmas Sashet by Regina Cagle



Jewelry – 1st - Chain necklace with thimble by Lena Williams

Wall Hangings - 1st - Scrappy Squares by Anna Stilwell (pic on pg 4)



UPCOMING EVENTS

Spring Conference
– April 7, 2015

Spring Retreat

– May 2015
in Glen Rose

- hosted by
Eastland County

**Please note that the Spring Retreat will be held in May in 2015, instead of August, to help you with budgeting, so you won't have so many events in such a short span of time.*



Cultural Arts Contest Results, continued

Photography – 1st - Adirondack Chairs by Dorothy Lane; 2nd - We Don't Rent Pigs by Lynda Ballard; Honorable mention - Anna Stilwell, Ruby Turner



Quilts - larger than 50x70 - hand-quilted - 1st - Butterfly Patchwork quilt by Lynda Ballard; 2nd - Navy Blue Floral quilt by Dorothy Lane



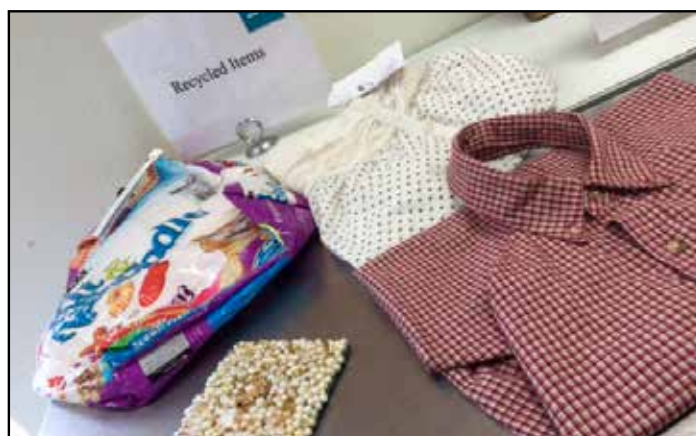
Quilts - smaller than 50x70 - machine quilted - 1st - Orange & Blue quilt by Sallie Smith; 2nd - Sleepy Teddy Bear quilt by Lynda Ballard; Honorable Mention - Dorothy Lane



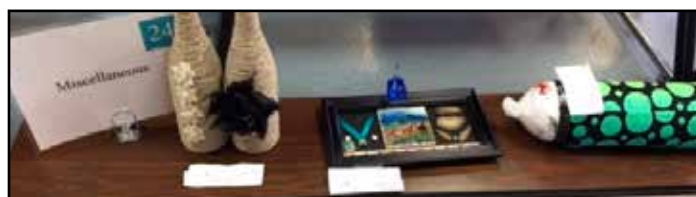
Quilts - any size, more than one member - 1st - Circle on Circle quilt by Lynda Ballard & Dorothy Lane (pic on right)



Quilts - larger than 50x70 - machine quilted - 1st - Reproduction Print quilt by Florence Hair; 2nd - Fan quilt by Lynda Ballard; Honorable Mention - Doris Threadgill



Recycled Items - 1st - Apron from Man's Shirt by Dorothy Lane; 2nd - Embellished Mirror by Carolyn Hays; Honorable Mention - Lynda Ballard, Lena Williams



Misc. - 1st - Twine Bottle by Lena Williams; 2nd - Shadow Box by Bonnie Wolfe; Honorable Mention - Carolyn Hays



And Off She Goes - to East Texas Our Dear Friend, Sallie Smith

You have that special something of which we all strive
That feelin of loving life, happy to be alive

That smile you givt to others, as they greet you
Your compliments, when more credit to you is due

That can-do attitude on projects big and small
On doing things right, giving it your all

That willingness to come to the aid of a friend
The many hearts you've helped to mend

That special way in showing your concern
Many good lessons from you, we did learn

That skill of bringing out the best in others, letting them shine
Our seeing your many talents, but little publicity suited you fine

That sense of duty in your Achievers Club work
From secretary to other jobs, you did not shirk

That, and so much more, we will miss so very much
Someone else will step in, but we'll miss you a bunch

Come back to see us, we'll look forward to that
Be assured, we'll always have out the welcome mat

So, Godspeed Dear Sallie, you are the best
Best wishes to you and Larry on your move
And all the rest!



Written on behalf of the
Stephenville Achievers Homemaking Club
By Martha Ables
July 8, 2014

Erath County Extension Office
112 W College St., Rm 109
Stephenville, TX 76401
(254) 965-1460
d-white@tamu.edu
erath.agrilife.org

The mission of the Texas Extension Education Association is to work with Texas A&M AgriLife Extension Service to strengthen and enrich families through educational programs, leadership development and community service. Membership is open to adult Erath County residents regardless of socioeconomic level, race, color, sex, religion, disability, or nationality.

