



# ERATH COUNTY 4-H NEWS

MAY 2020

TEXAS A&M  
**AGRI LIFE**  
EXTENSION

## ERATHCO.STAFF

**Helen Hardy**  
CEA - 4-H  
[helen.hardy@ag.tamu.edu](mailto:helen.hardy@ag.tamu.edu)

**Andrea Degelia**  
CEA - Family &  
Community Health  
[andrea.degelia@ag.tamu.edu](mailto:andrea.degelia@ag.tamu.edu)

**Lonnie Jenschke**  
CEA - Ag & NR  
[l-jenschke@tamu.edu](mailto:l-jenschke@tamu.edu)

**Rachel Betz**  
Office Manager  
[rachel.betz@ag.tamu.edu](mailto:rachel.betz@ag.tamu.edu)

**Katie Blackwell**  
Part-time Secretary  
[katie.blackwell@ag.tamu.edu](mailto:katie.blackwell@ag.tamu.edu)

**Erath County Office**  
112 W College, St 109  
Stephenville, TX 76401  
**254-965-1460**  
[erath@ag.tamu.edu](mailto:erath@ag.tamu.edu)

[erath.agrilife.org](http://erath.agrilife.org)

[facebook.com/Erath4H](https://facebook.com/Erath4H)



**Join us on June 17<sup>th</sup> - 19<sup>th</sup> to go all in at SURGE  
(Leadership Lab) Camp in Brownwood, TX!**

4-H members who have completed at least the 8th grade at the time of SURGE may participate. The registration fee covers lodging, all meals, program activities, insurance, curriculum, and T-shirts. The attire is school appropriate.

**Registration Deadline - May 22<sup>nd</sup>!!**

Call the CEO for more information or if you are interested in attending SURGE this year.

## **INSIDE THIS ISSUE:**

Event Fund Update  
Banquet Update  
Horse Validation & Show  
Summer Camps

D8 TAE4-HA Scholarship  
Virtual Contests  
Summer Validation  
Club Chartering Notice  
Calendar

## Event Funds

*We have funds  
from:*

*Youth Fair  
Fort Worth  
San Angelo  
San Antonio*

*Houston (Floor Checks)  
Austin Refunds*

*Please call to  
make an  
appointment to  
pick up your  
envelope!!*

*\*Youth Fair Thank  
You notes must  
be competed to  
pick up YF Funds\**

*We are still  
waiting on Texas  
Elite and Houston  
Refunds,  
Premiums, and  
Prize Money.*

**←UPDATED→**

## 2019 – 2020 AWARDS BANQUET

This year's 4-H awards banquet will be held in late- August 2020 and in compliance with State and County COVID-19 mandates/precautions. Location and Date TBD.

Due to multiple County, District, and State level contests being cancelled, no prizes will be awarded in these categories.

Awards to be presented:

Enrolled Clover Kids

Completed Project Forms – up to 5 awards per member

Completed Recordbooks

County Council Members

Club Managers

Star Award Applicants – 5<sup>th</sup>, 8<sup>th</sup>, & 12<sup>th</sup> grade applicants will receive a Belt Buckle!!

Years in 4-H

Project Completion Forms & Star Award Requirements and Applications:  
<https://erath.agrilife.org/4-h-awards-banquet/>  
or email Helen to be sent forms directly!

NOTE: Star Awards require a percentage of club meeting attendance to be met. This requirement will not be enforced this year due to COVID-19 circumstances.

**Star Award Applications DUE:  
June 29<sup>th</sup>, 2020**

**Project Completion Forms DUE:  
August 3<sup>rd</sup>, 2020**

# Horse Show News

## VALIDATION

All horses shown at the District or State 4-H Horse show **MUST BE VALIDATED** online through 4-H Connect. Re-validation is required every year for returning horses/exhibitors.



**Cost of Validation per Horse:**  
March 1<sup>st</sup> – May 16<sup>th</sup>: \$10.00/horse



## DISTRICT 8 4-H HORSE SHOW

June 15<sup>th</sup> – 16<sup>th</sup>, 2020  
Bell County Expo Center – Belton, TX  
Deadline to Enter: May 22<sup>nd</sup>

*Rules, Schedule, & More:*

<https://agrillife.org/d84h/events-and-activities/horse-show/>

## TEXAS STATE 4-H HORSE SHOW

July 19<sup>th</sup> – 25<sup>th</sup>

Brazos County Expo Center – Bryan, TX

Contestants must enter within 48 hours after the D8 Horse Show ends. Contestants cannot enter a Qualifying Division at State unless they showed in at least one class within that same division at District. Contestants do not have to show at District in order to show in the Open Divisions at State.

*Rules, Schedule, & More:*

<https://animalscience.tamu.edu/livestock-species/equine/state-4h-show/>

**Stay connected  
with Texas 4-H:**

<https://texas4-h.tamu.edu/>



[texas4h](#)



[@Texas4H](#)



[texas4h](#)



[texas4h](#)



[tx4h](#)



[tx4hphotos](#)



[Newsletter](#)



Mark these dates  
for summer  
camp on your  
calendar today!!

**SURGE (Leadership Lab):** June 17 - 19

Texas 4-H Conference Center, Brownwood, TX

Cost: \$215, 9<sup>th</sup> – 12<sup>th</sup> grade

**Southeast DS County Camp:** June 26 – 28

Lakeview Methodist Camp, Palestine, TX

Cost: Approx. \$125, 3<sup>rd</sup> – 12<sup>th</sup> grade

**Food Camp:** TBD

We are currently planning a virtual food camp opportunity!

Stay Tuned!!

**Sewing Camp:** July 6 - 8

District Research & Extension Center

Cost: Approx. \$40, 3<sup>rd</sup> – 12<sup>th</sup> grade

**Textiles (No-Sew) Camp:** July 10

District Research & Extension Center

Cost: Approx. \$20, K – 2<sup>nd</sup> grade



## DISTRICT 8 TAE4-HA SCHOLARSHIP

On behalf of the District 8 TAE4-HA, we are happy to release the 2020 District 8 TAE4-HA Scholarship application that is now an online application! This is a NEW format this year so please pay attention to the submission guidelines and requirements.

- Application due by May 22<sup>nd</sup>, 2020.
- District 8 4-H members who do NOT receive a 4-H Foundation or Terry Foundation scholarship are eligible to apply.
- Applications will be reviewed by a scholarship committee. All decisions are final.
- Applications must be complete in order to be accepted.
- This scholarship is available to 4-H members who plan to attend a college, university, or technical school in Texas or out-of-state.
- Please make sure to upload your official transcript & 2 letters of recommendation
- <https://docs.google.com/forms/d/e/1FAIpQLScQXULJmwe6U2LMcntjNJOhAN4IT8DPQdivVsCEuw8H2SjDqw/viewform> or accessible through the District 8 4-H website

# VIRTUAL CONTEST

## OPPORTUNITIES

### HORSE JUDGING



- May 1<sup>st</sup> – 15<sup>th</sup>
- [www.livestockjudging.com](http://www.livestockjudging.com), code: GQ86

### HORSE QUIZ BOWL

- May 4<sup>th</sup> – 7<sup>th</sup>
- Registration: <https://forms.gle/Q6h8h7NfPyUQN5Cd6>

### LIVESTOCK QUIZ BOWL



- May 4<sup>th</sup> – 7<sup>th</sup>
- Registration: <https://forms.gle/UTmSuzX8fSfcXKCo9>

### LIVESTOCK SKILLATHON

- May 4<sup>th</sup> – 8<sup>th</sup>
- Registration: <https://forms.gle/Lbw1mJQVbsdxVvTr5>

### FASHION VIDEO CHALLENGE



- May 11<sup>th</sup> – 15<sup>th</sup>
- Email 3-minute inspiration and style videos to [kljungman@ag.tamu.edu](mailto:kljungman@ag.tamu.edu) or [angie.nors@ag.tamu.edu](mailto:angie.nors@ag.tamu.edu)

### PUBLIC SPEAKING INFORMATIONAL



- May 12<sup>th</sup>
- Registration: <https://forms.gle/nVKSCrJXGQWICAk6>



### Cancelled Programs:

We will keep everyone up to date the best we can on the status of summer programs! As of now, these are the only confirmed cancelled county and state 4-H events:

**Kids, Kows, & More**  
May 15<sup>th</sup>

**Texas 4-H Roundup**  
June 8<sup>th</sup> – 11<sup>th</sup>

**Texas 4-H Roping School**  
June 21<sup>st</sup> – 25<sup>th</sup>

### SUMMER VALIDATION

Major – Steers &  
Summer Heifers  
State Fair – Market  
Lamb, Goat, &  
Swine and  
Purebred Gilts  
(Heifers will be invoiced  
after Validation)

**When:** Tuesday,  
June 23<sup>rd</sup>, 2020  
and  
Tuesday, June 30<sup>th</sup>,  
2020  
8:00am – 10:00am  
\*Swine will ONLY  
be done on 6/23\*

**Where:**  
Stephenville Cattle  
Company  
(Stephenville Sale  
Barn)

**If you cannot  
make it to either  
date,  
let Helen know  
ASAP!!**

# CLUB MEETINGS

Contact your Club Managers to confirm date, time & location of your next club meeting.

**If you need to come to the office, please do so by making an appointment!**

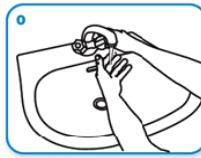
**Keep an eye out for programming updates from AgriLife Extension, Governor Abbott, and the County Office – everything is still subject to change!**

*How an Erath County 4-H Member should wash their hands...*

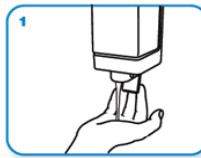
## 2020 – 2021 CLUB CHARTERING

**It is already time to start thinking about the next 4-H year!!**

**Each Club Manager will be required to meet with Helen either in person or via Zoom to discuss club charting documents.**



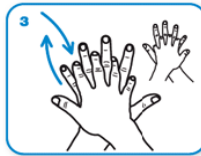
In support



Of the 4-H motto:



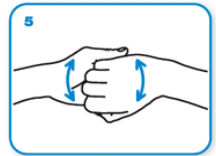
To Make the Best Better.



I Pledge



My Head to clearer thinking



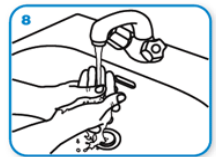
My Heart to greater loyalty



My Hands to larger service



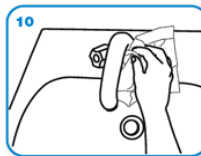
And My Health to better living



For my club,



My community,



My country,



And My world.



# MAY 2020



| Sunday | Monday     | Tuesday | Wednesday | Thursday | Friday | Saturday |
|--------|------------|---------|-----------|----------|--------|----------|
|        |            |         |           |          | 1      | 2        |
| 3      | 4          | 5       | 6         | 7        | 8      | 9        |
| 10     | 11         | 12      | 13        | 14       | 15     | 16       |
| 17     | 18         | 19      | 20        | 21       | 22     | 23       |
| 24/31  | 25         | 26      | 27        | 28       | 29     | 30       |
|        | CEO Closed |         |           |          |        |          |

No fees will be charged for events until we are 100% sure the event is going to take place!! However, you still must register ON TIME for the event!!

Horse Show Entries,  
SURGE, D8 Council  
Apps & TAE4-HA  
Scholarship DUE

## June Events & Deadlines

- June 15<sup>th</sup> - 16<sup>th</sup> -  
D8 Horse Show
- June 17<sup>th</sup> - 19<sup>th</sup> -  
SURGE (Leadership Lab)
- June 23<sup>rd</sup> - Validation
- June 24<sup>th</sup> - 4-H FCH  
Coalition Meeting
- June 26<sup>th</sup> - 28<sup>th</sup> -  
SE D8 County Camp
- June 29<sup>th</sup> - Star Award  
Apps DUE
- June 30<sup>th</sup> - Validation

## *Erath County 4-H Clubs*

| <b>4-H CLUBS – MONTHLY MEETING SCHEDULE</b> |   |                          |             |                     |                |
|---|---|--------------------------|-------------|---------------------|----------------|
| <b>CLUB</b>                                 | <b>MEETING PLACE</b>                            | <b>DAY</b>               | <b>TIME</b> | <b>CLUB MANAGER</b> | <b>PHONE</b>   |
| <b>COMMUNITY CLUBS</b>                      |   |                          |             |                     |                |
| County Council                              | County Extension Office                         | As Needed                | As Needed   | Helen Hardy         | (254) 965-1460 |
| Morgan Mill                                 | Morgan Mill Community Center                    | 3 <sup>rd</sup> Tuesday  | 6:30pm      | Elizabeth Starnes   | (254) 592-2000 |
| Stephenville                                | Valley Grove Baptist Church                     | 2 <sup>nd</sup> Monday   | 6:00pm      | Kendi Maruska       | (254) 744-7225 |
| Foster's Home                               | Foster's Home                                   | 2 <sup>nd</sup> Sunday   | 3:00pm      | Brawnson Oliver     | (254) 968-2143 |
| <b>PROJECT CLUBS</b>                        |   |                          |             |                     |                |
| Dairy                                       | Southwest Regional Dairy                        | 3 <sup>rd</sup> Thursday | 7:00pm      | Heather Jones       | (254) 967-3790 |
| Entomology                                  | Meet as needed – Contact Club Manager for Info. |                          |             | Krista Pendergrass  | (254) 485-1450 |
| Horse                                       | Meet as needed – Contact Club Manager for Info. |                          |             | Mary Sue Dunbar     | (254) 977-4924 |
| Lamb & Goat                                 | TSU Ag Farm                                     | 1 <sup>st</sup> Thursday | 6:00pm      | Carol Barrett       | (254) 485-5957 |
| Pasture to Packer                           | County Extension Office                         | As Needed                | As Needed   | Lonnie Jenschke     | (254) 965-1460 |
| Shooting Sports                             | Research & Extension Center                     | 1 <sup>st</sup> Tuesday  | 6:00pm      | Roy Green           | (254) 967-3737 |
| <b>IN-SCHOOL CLUBS</b>                      |   |                          |             |                     |                |
| White Horse Christian Academy               | White Horse Christian Academy                   | 1 <sup>st</sup> Monday   | ---         | Vanessa Halford     | (254) 459-1230 |

Enrolled 4-H Members can be a part of multiple clubs at their discretion.  
However, you must select a Primary Club during enrollment.

*It is advised to call the Club Manager to check for time and/or location changes  
if this is your first time attending!*

Provisions from the American Disability Act will be considered when planning educational programs and activities. Please notify the Erath County Extension Office as far in advance of the program as possible if you plan on attending an Extension